

# Virus WAch

WEEK ENDING 4<sup>TH</sup> DECEMBER 2011

## KEY POINTS

### INFLUENZA AND INFLUENZA-LIKE ILLNESSES

- ILI presentations to SPN(WA) GPs and Perth Emergency Departments, and influenza laboratory detections made by PCR at PathWest QEII and PMH, remain relatively low and stable.
- Influenza detections comprised 61% (11) A-H3 virus, 33% (6) influenza B virus, 6% (1) influenza A (unspecified) virus.

### GASTROENTERITIS

- Gastroenteritis presentations to SPN(WA) GPs decreased slightly this week, while gastroenteritis presentations to Perth EDs remain stable, but high.
- Norovirus positives identified at PathWest QEII and rotavirus notifications received at CDCD decreased.

### VARICELLA AND VIRAL RASHES

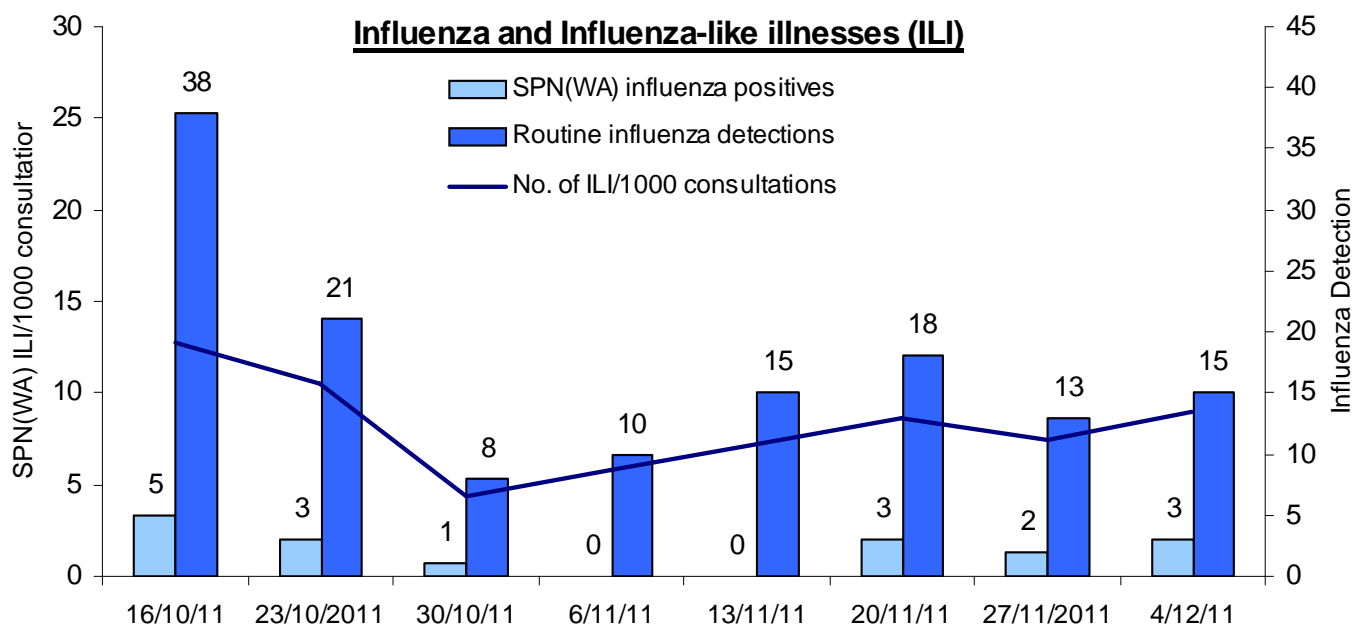
- Chickenpox and shingles presentations to SPN(WA) GPs and Perth EDs continue to fluctuate at low to moderate levels.
- No cases of measles or rubella were reported this week. One case of locally-acquired mumps was reported.

### Links

Current and archived issues of Virus Watch, Virus News and EDSS News  
[http://www.public.health.wa.gov.au/3/487/3/virus\\_watch.pm](http://www.public.health.wa.gov.au/3/487/3/virus_watch.pm)

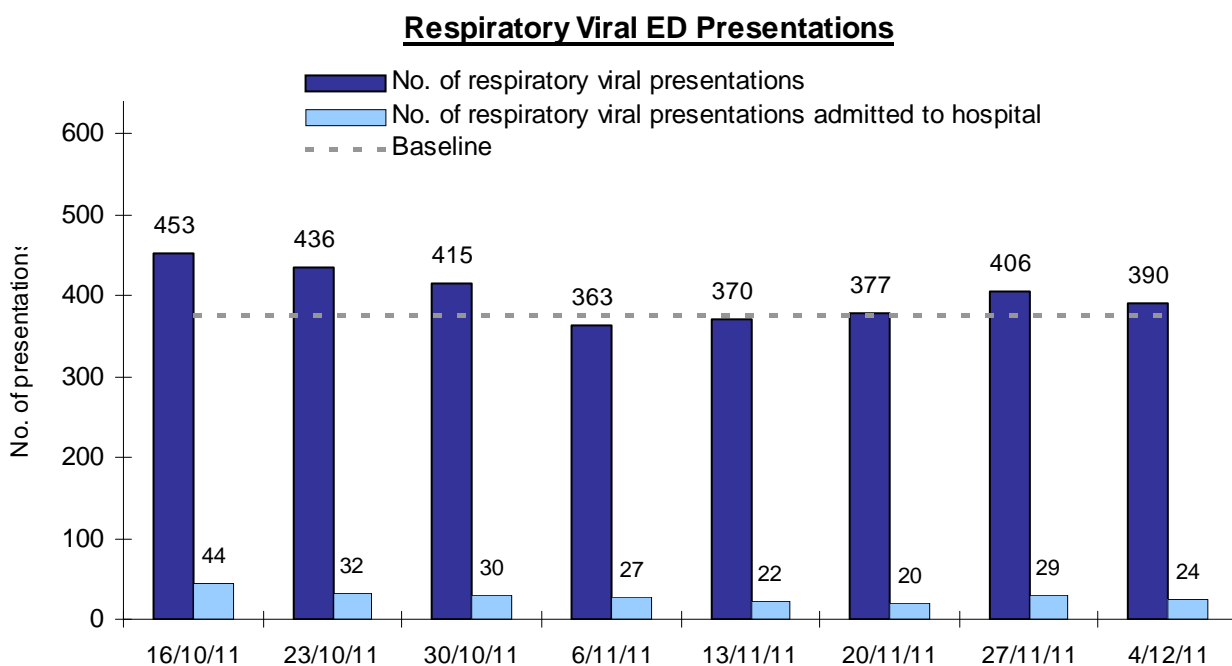
*Virus WAch is a weekly electronic publication by the Communicable Disease Control Directorate (CDCD) and key collaborators. It provides a brief summary of General Practice and Hospital Emergency Department sentinel surveillance data on influenza-like illness, gastroenteritis and varicella-zoster disease, together with relevant laboratory information, to alert health care workers in WA to important circulating viruses. General Practice data are collected by members of the Sentinel Practitioners Network of Western Australia - SPN(WA). Emergency Department data are provided by Perth Hospital Emergency Departments via the Emergency Department Information System (EDIS). Viral laboratory data are obtained from PathWest laboratories at QEII Medical Centre and Princess Margaret Hospital for Children, as well as via notification data sent by all WA laboratories to CDCD, WA Department of Health. All figures and data were accurate at time of publication, but subject to change.*

# Influenza and Influenza-like Illnesses



ILI presentations to SPN(WA) GPs and influenza laboratory detections made by PCR at PathWest QEII and PMH remain relatively low and stable. Influenza detections comprised 61% (11) A-H3 virus, 33% (6) influenza B virus, 6% (1) influenza A (unspecified) virus.

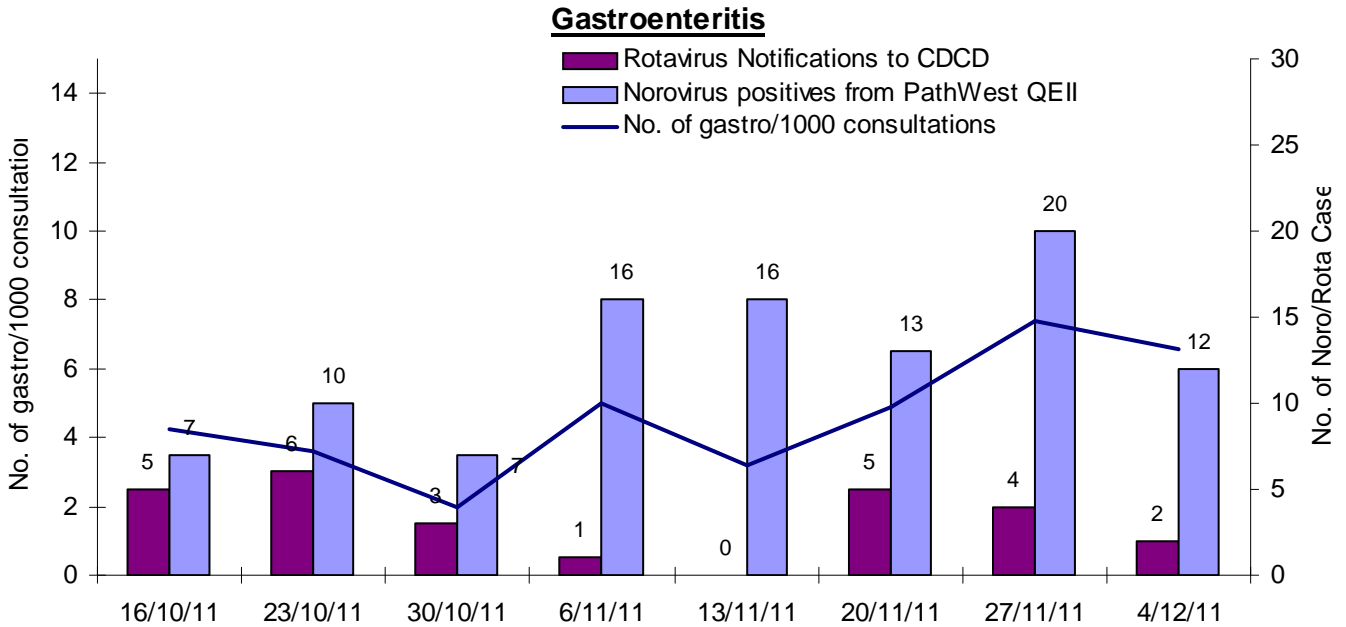
The following is a summary of current Emergency Department sentinel surveillance (EDSS) data for respiratory viral presentations. Baseline levels for respiratory viral presentations were calculated using the mean of weekly EDIS data from week 1, 2008 to week 52, 2010.



Respiratory viral presentations to Perth EDs decreased this week, and sit just above baseline level. The proportion of presentations admitted to hospital decreased slightly this week.

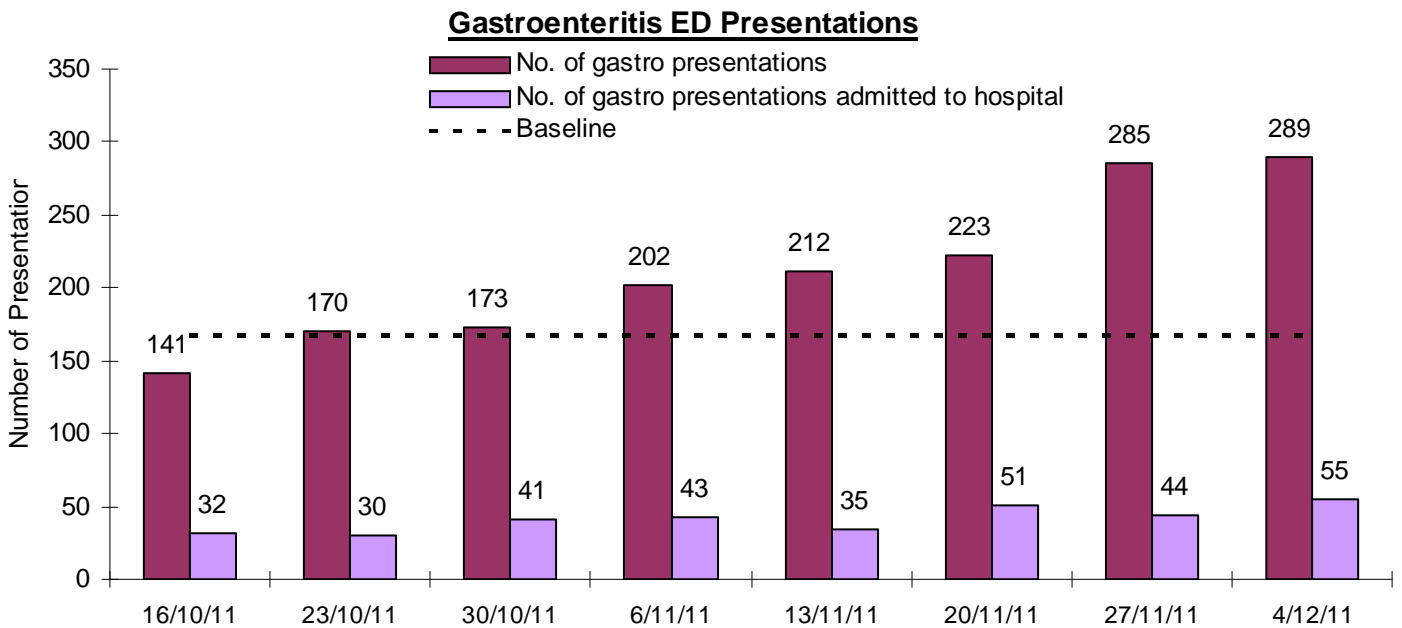


# Gastroenteritis



**Gastroenteritis presentations to SPN(WA) GPs decreased slightly this week. Norovirus positives identified at PathWest QEII and rotavirus notifications received at CDCD decreased.**

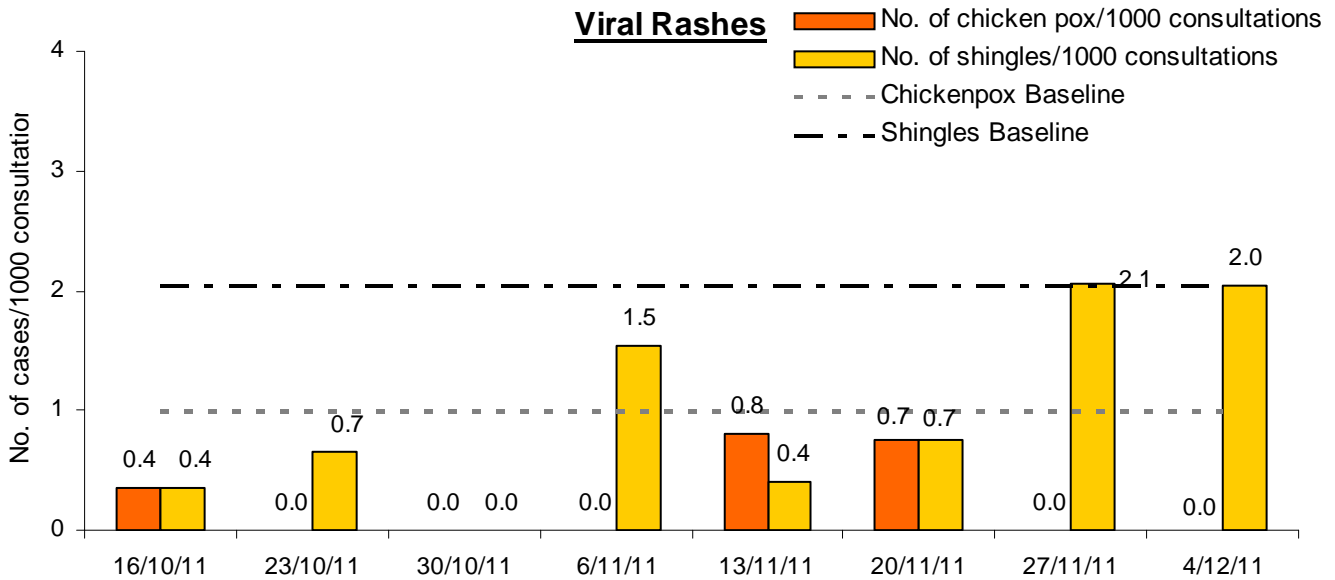
The following is a summary of current Emergency Department sentinel surveillance (EDSS) data for gastroenteritis presentations. Baseline levels for gastroenteritis presentations were calculated using the mean of weekly EDIS data from week 1, 2008 to week 52, 2010.



**Gastroenteritis presentations to Perth EDs increased slightly this week. The proportion of presentations admitted to hospital increased from 15% to 19% this week.**



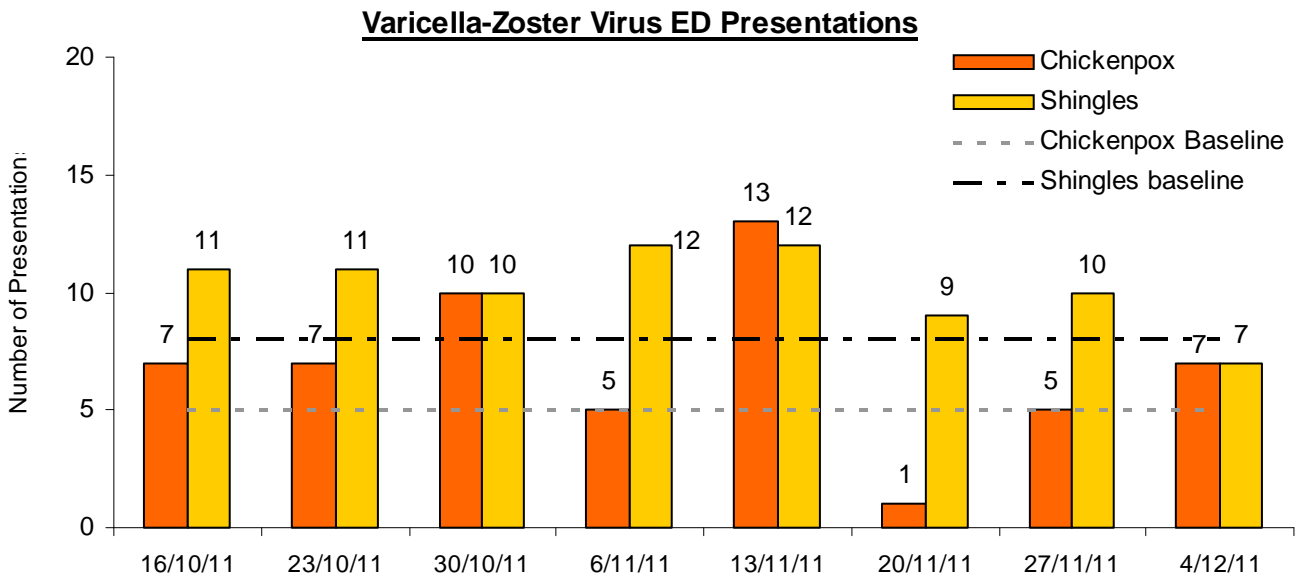
# Viral Rashes



**Chickenpox and shingles presentations to SPN(WA) GPs remain stable this week. No cases of measles or rubella were reported. One case of locally-acquired mumps was reported.**

Baseline levels for chickenpox and shingles presentations to SPN(WA) GPs per thousand consultations were calculated using the mean of weekly WA ASPREN data from week 1, 2008 to week 52, 2010.

The following is a summary of current Emergency Department sentinel surveillance (EDSS) data for varicella-zoster virus presentations. Baseline levels for varicella-zoster virus presentations were calculated using the mean of weekly EDIS data from week 1, 2008 to week 52, 2010.



**Chickenpox presentations to Perth EDs increased this week, while shingles presentations decreased.**

