



# Virus WA<sup>tch</sup>

WEEK ENDING 13<sup>TH</sup> NOVEMBER 2011

## KEY POINTS

### INFLUENZA AND INFLUENZA-LIKE ILLNESSES

- ILI presentations to SPN(WA) GPs decreased to very low levels this week, while respiratory viral presentations to Perth Emergency Departments and laboratory detections made by PCR at PathWest QEII and PMH increased slightly.
- Influenza detections comprised 67% (10) A-H3 virus, 20% (3) influenza B virus, and 13% (2) influenza A (unspecified) virus.

### GASTROENTERITIS

- Gastroenteritis presentations to SPN(WA) GPs decreased this week, while gastroenteritis presentations to Perth EDs increased slightly.
- Norovirus positives identified at PathWest QEII (moderately high levels) and rotavirus notifications received at CDCD (low levels) remain stable.

### VARICELLA AND VIRAL RASHES

- Chickenpox and shingles presentations to SPN(WA) GPs and Perth EDs continue to fluctuate at low to moderate levels.
- Three unrelated cases of measles were confirmed in Perth (2 cases) and Margaret River area (1 case) residents this week – the three cases had independently attended the Rugby World Cup in New Zealand. No cases of mumps or rubella were reported.

### Links

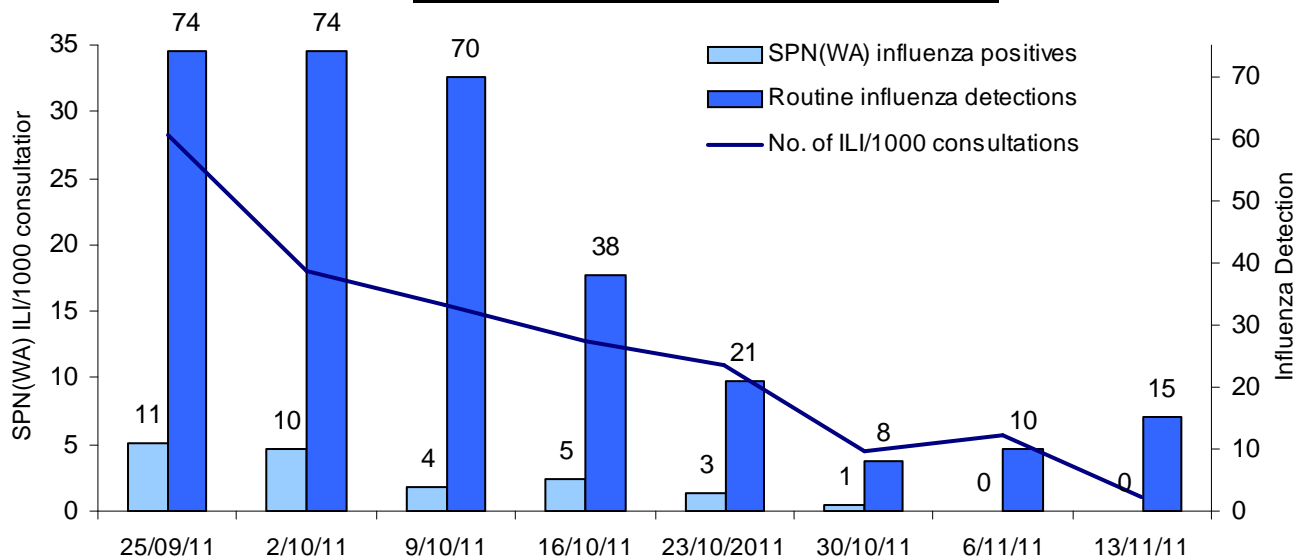
Current and archived issues of Virus Watch, Virus News and EDSS News  
[http://www.public.health.wa.gov.au/3/487/3/virus\\_watch.pm](http://www.public.health.wa.gov.au/3/487/3/virus_watch.pm)

*Virus WA<sup>tch</sup> is a weekly electronic publication by the Communicable Disease Control Directorate (CDCD) and key collaborators. It provides a brief summary of General Practice and Hospital Emergency Department sentinel surveillance data on influenza-like illness, gastroenteritis and varicella-zoster disease, together with relevant laboratory information, to alert health care workers in WA to important circulating viruses. General Practice data are collected by members of the Sentinel Practitioners Network of Western Australia - SPN(WA). Emergency Department data are provided by Perth Hospital Emergency Departments via the Emergency Department Information System (EDIS). Viral laboratory data are obtained from PathWest laboratories at QEII Medical Centre and Princess Margaret Hospital for Children, as well as via notification data sent by all WA laboratories to CDCD, WA Department of Health. All figures and data were accurate at time of publication, but subject to change.*



# Influenza and Influenza-like Illnesses

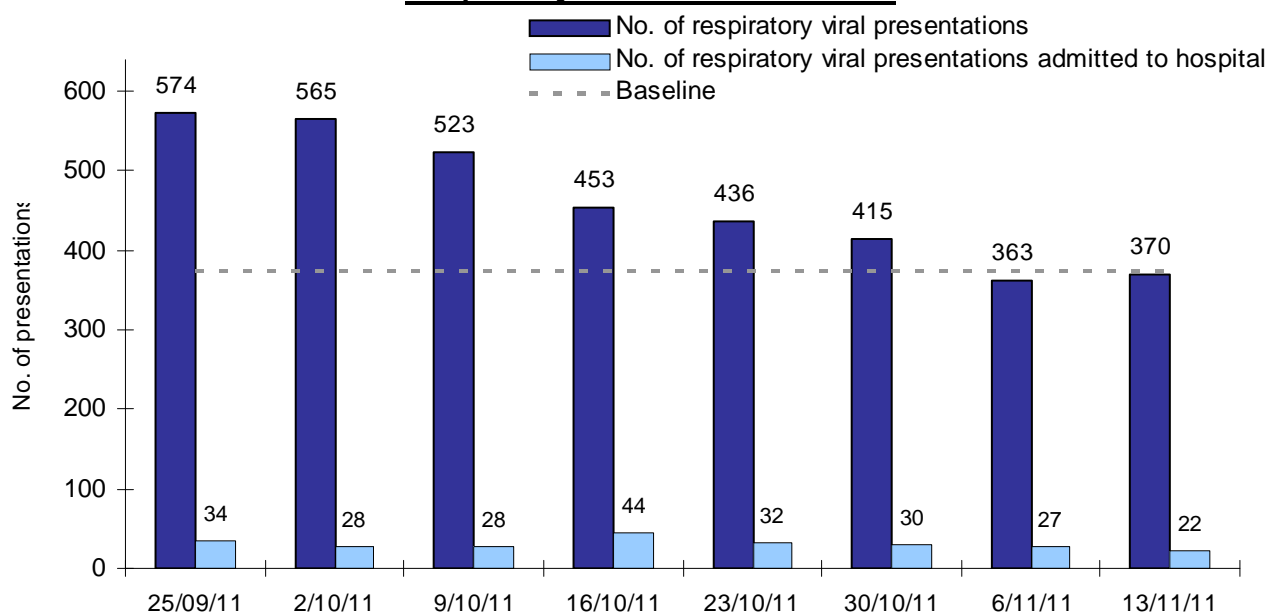
**Influenza and Influenza-like illnesses (ILI)**



ILI presentations to SPN(WA) GPs decreased to very low levels this week, while laboratory detections made by PCR at PathWest QEII and PMH increased slightly. Influenza detections comprised 67% (10) A-H3 virus, 20% (3) influenza B virus, and 13% (2) influenza A (unspecified) virus.

The following is a summary of current Emergency Department sentinel surveillance (EDSS) data for respiratory viral presentations. Baseline levels for respiratory viral presentations were calculated using the mean of weekly EDIS data from week 1, 2008 to week 52, 2010.

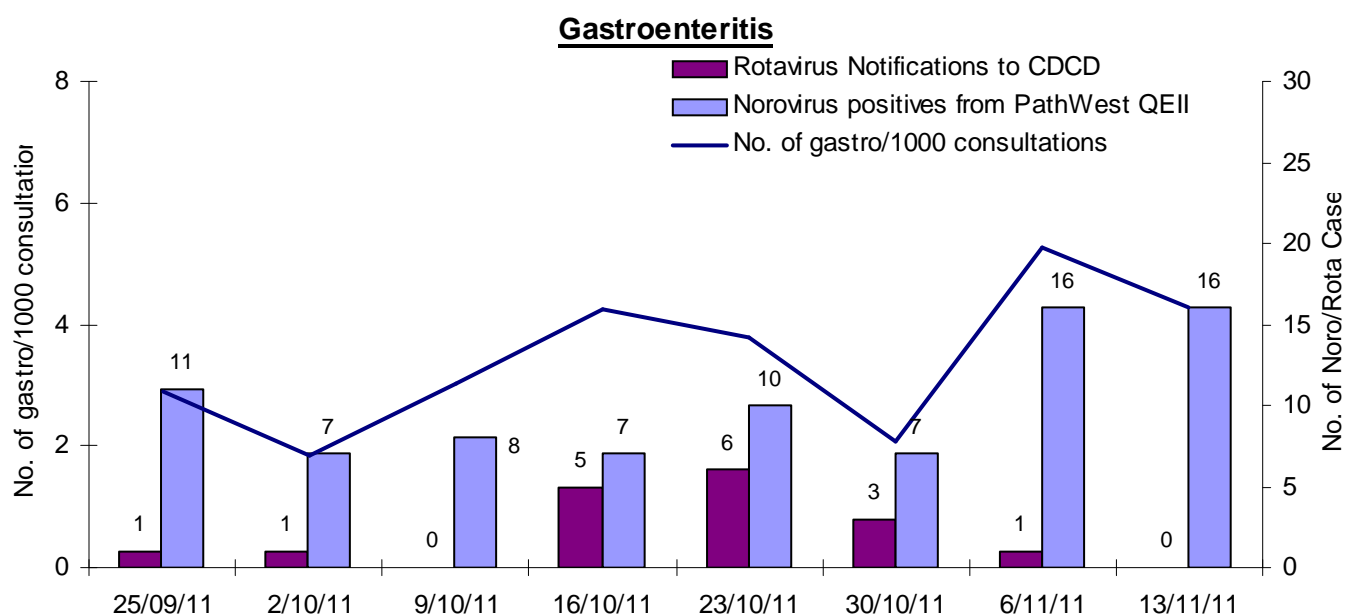
**Respiratory Viral ED Presentations**



Respiratory viral presentations to Perth EDs remain stable, and sit just below baseline level. The proportion of presentations admitted to hospital decreased slightly this week.

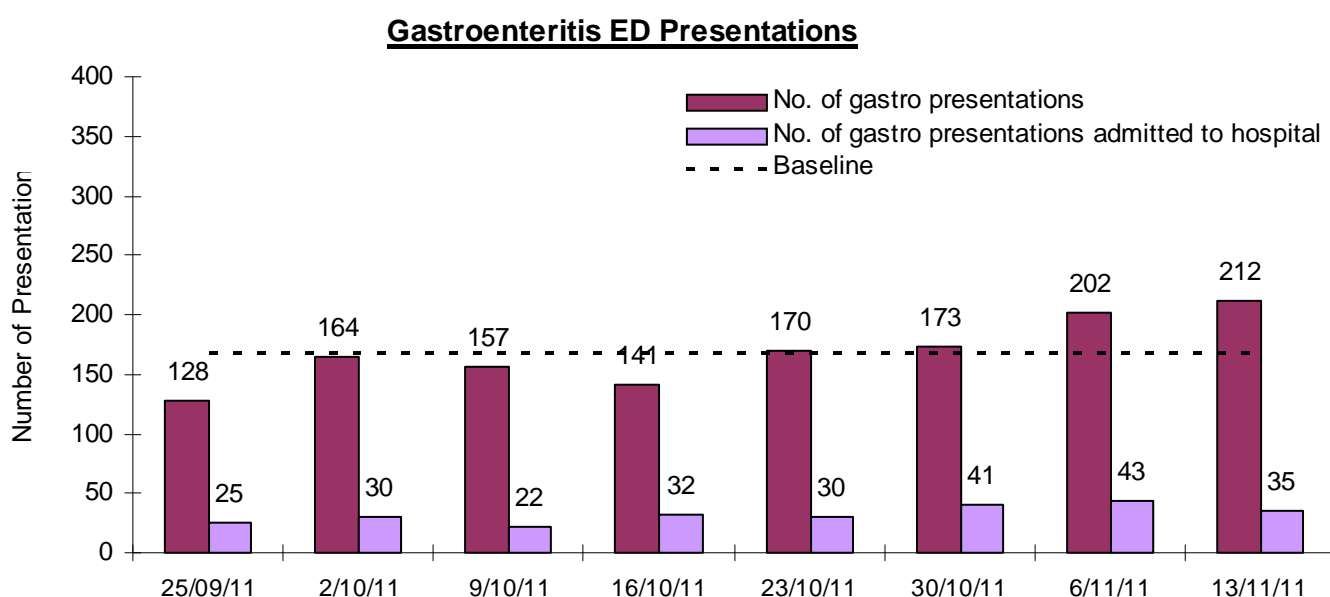


# Gastroenteritis



**Gastroenteritis presentations to SPN(WA) GPs decreased this week. Norovirus positives identified at PathWest QEII and rotavirus notifications received at CDCD remain stable.**

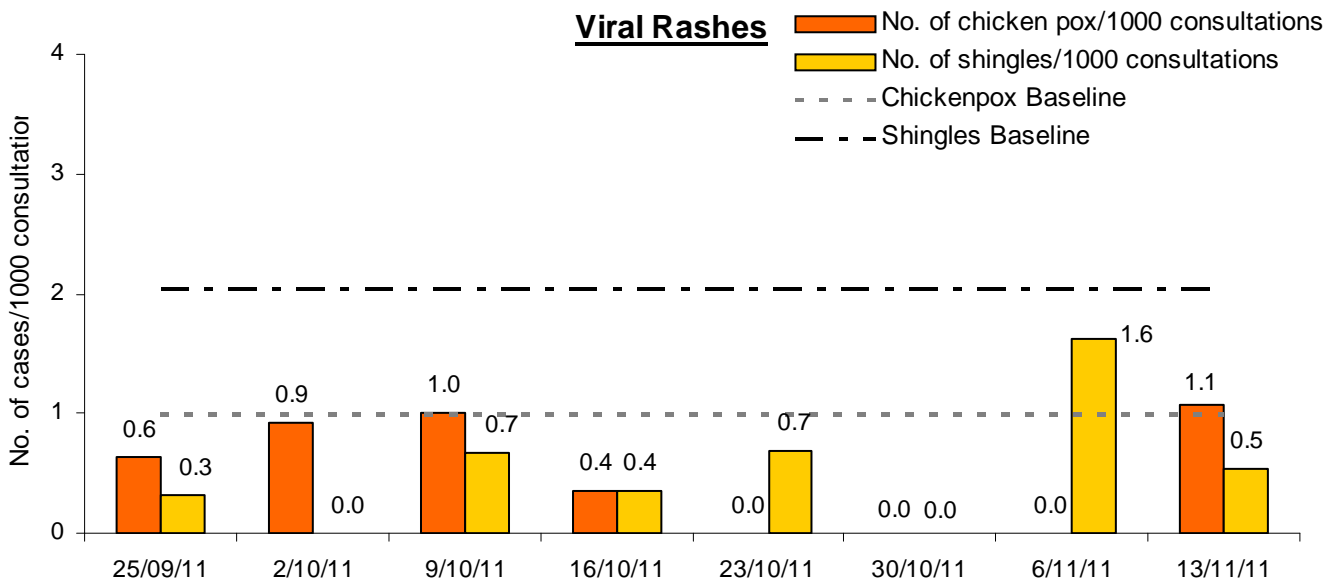
The following is a summary of current Emergency Department sentinel surveillance (EDSS) data for gastroenteritis presentations. Baseline levels for gastroenteritis presentations were calculated using the mean of weekly EDIS data from week 1, 2008 to week 52, 2010.



**Gastroenteritis presentations to Perth EDs increased slightly this week, while the proportion of presentations admitted to hospital decreased.**



# Viral Rashes

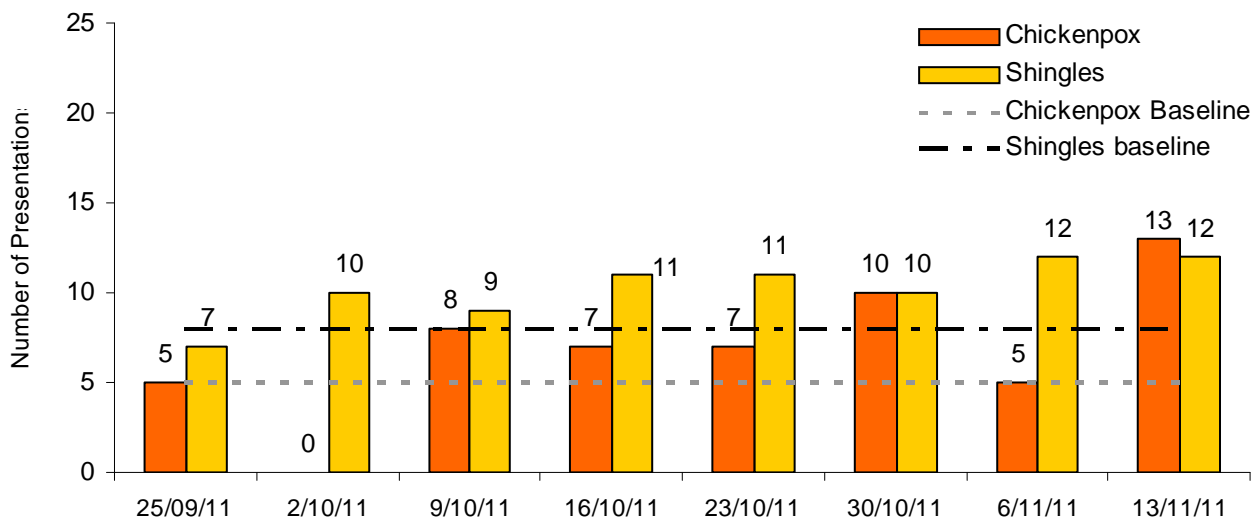


**Chickenpox presentations to SPN(WA) GPs increased this week, while shingles presentations decreased. Three unrelated cases of measles were reported in Perth (2 cases) and Margaret River area (1 case) residents this week – all three had recently attended the Rugby World Cup in New Zealand. No cases of mumps or rubella were reported.**

Baseline levels for chickenpox and shingles presentations to SPN(WA) GPs per thousand consultations were calculated using the mean of weekly WA ASPREN data from week 1, 2008 to week 52, 2010.

The following is a summary of current Emergency Department sentinel surveillance (EDSS) data for varicella-zoster virus presentations. Baseline levels for varicella-zoster virus presentations were calculated using the mean of weekly EDIS data from week 1, 2008 to week 52, 2010.

## Varicella-Zoster Virus ED Presentations



**Chickenpox presentations to Perth EDs increased this week, while shingles presentations remain stable. One shingles patient was admitted to hospital.**

