

Virus Watch



Government of Western Australia
Department of Health

Week ending 16th of October 2011

KEY POINTS

Influenza and Influenza-like Illnesses

- ILI presentations to SPN(WA) GPs, laboratory detections made by PCR at PathWest QEII, and respiratory viral presentations to Perth EDs decreased this week, all indicating that influenza transmission is in decline.
- Overall influenza detections comprised 46.5% (20) A-H3 virus, 23.3% (10) A-H1N1 (2009) virus, 20.9% (9) influenza B virus and 9.3% (4) influenza A unspecified.
- RSV detections identified at PathWest QEII and PMH decreased significantly this week.

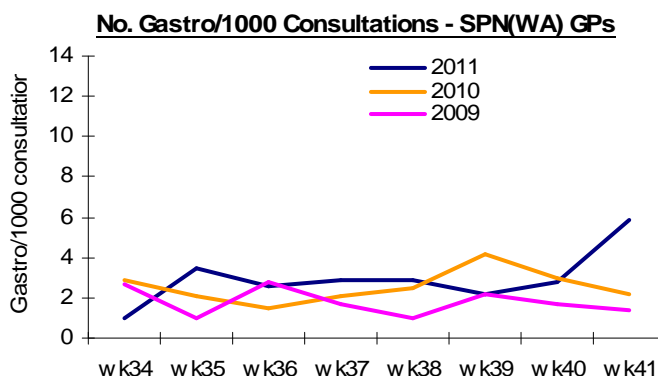
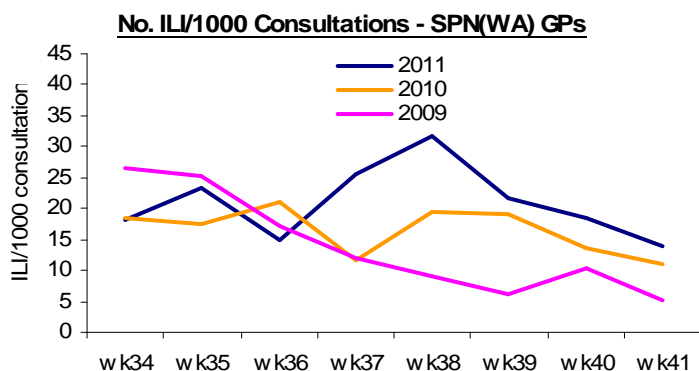
Gastroenteritis

- Gastroenteritis presentations to SPN(WA) GPs, and rotavirus notifications received at CDCD, increased this week.
- Norovirus positives identified at PathWest QEII remain relatively stable.
- Gastroenteritis presentations to Perth EDs decreased this week.

Varicella and Viral Rashes

- Chickenpox and shingles presentations to SPN(WA) GPs and Perth EDs continue to fluctuate at low to moderate levels.
- No cases of measles, mumps or rubella were reported this week.

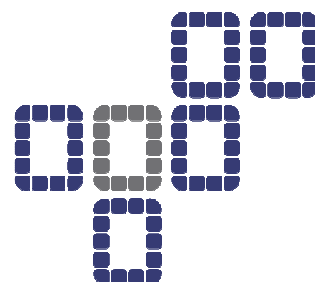
ILI and gastroenteritis notifications per thousand SPN(WA) consultations for the current reporting period, 2009 – 2011



Links

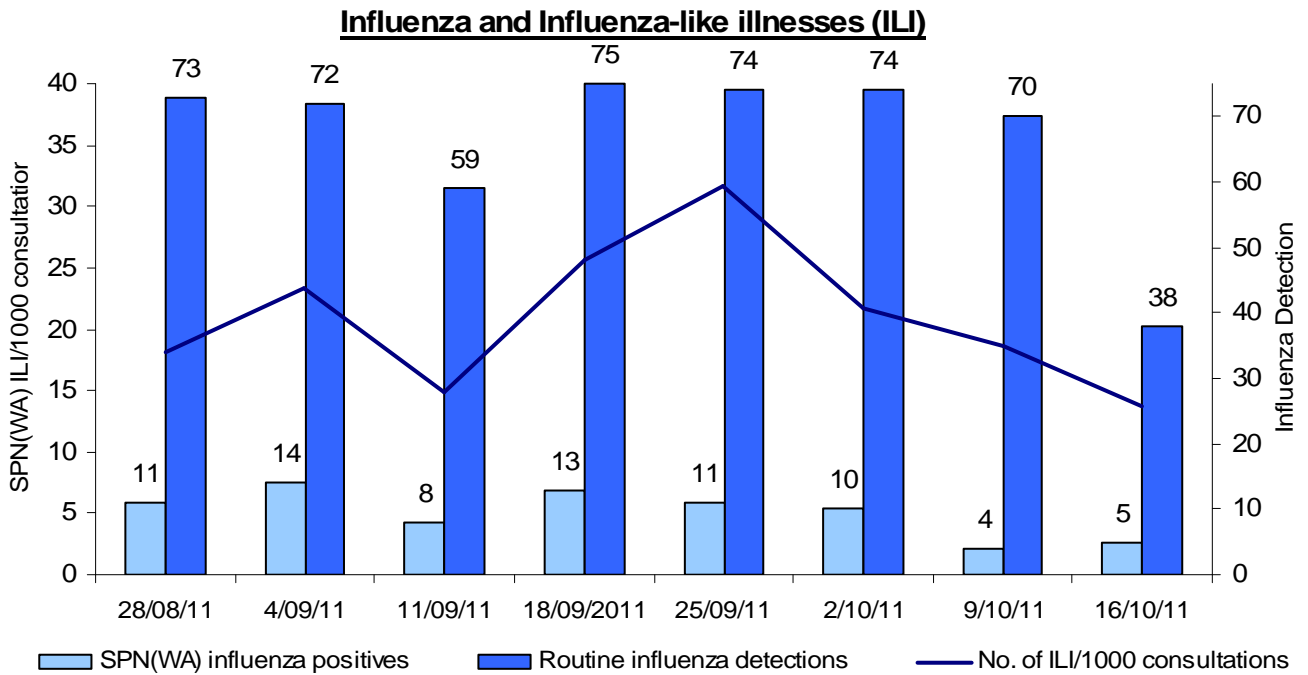
Current and archived issues of Virus Watch, Virus News and EDSS News
http://www.public.health.wa.gov.au/3/487/3/virus_watch.pm

Virus Watch is a weekly electronic publication by the Communicable Disease Control Directorate (CDCD) and key collaborators. It provides a brief summary of General Practice (GP) and Hospital Emergency Department sentinel surveillance data on influenza-like illness, gastroenteritis and varicella-zoster disease, together with relevant laboratory information, to alert health care workers in WA to important circulating viruses. GP data are collected by members of the Sentinel Practitioners Network of Western Australia - SPN(WA). Emergency Department data are provided by Perth Hospital Emergency Departments via the Emergency Department Information System (EDIS). Viral laboratory data are obtained from PathWest laboratories at QEII Medical Centre and Princess Margaret Hospital for Children, as well as via notification data sent by all WA laboratories to CDCD, WA Department of Health. All figures and data were accurate at time of publication, but subject to change.



Delivering a Healthy WA

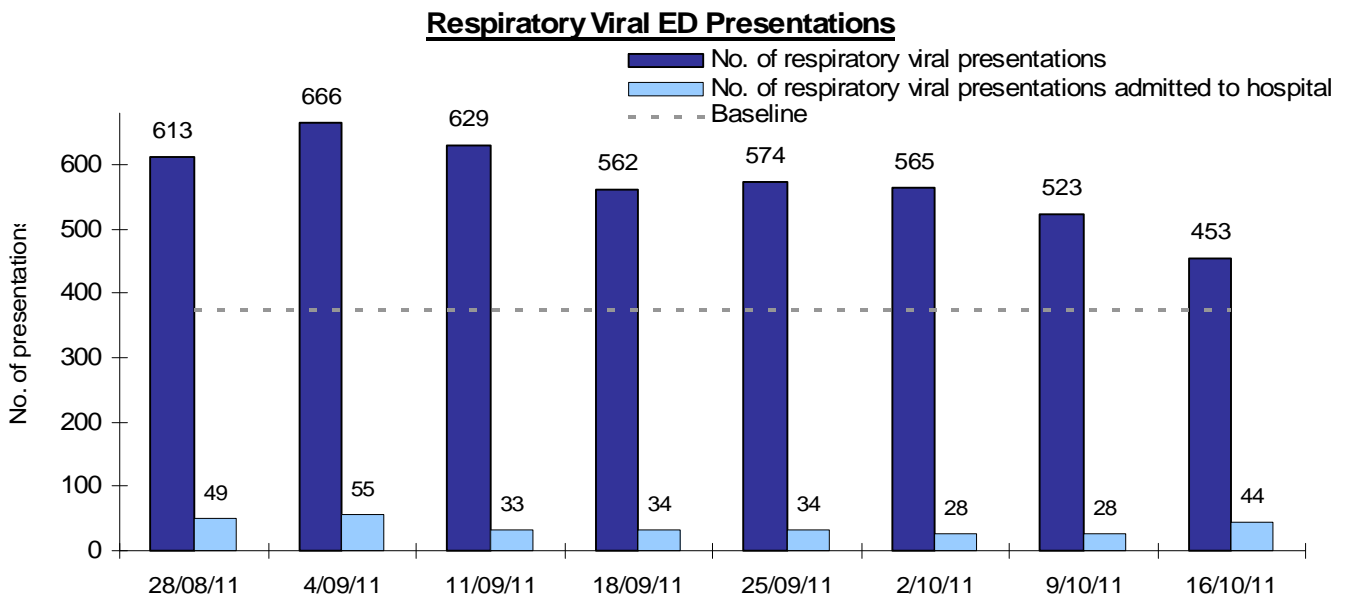
Influenza and Influenza-like Illnesses



ILI presentations to SPN(WA) GPs, and laboratory detections made by PCR at PathWest QEII, decreased this week. Overall influenza detections comprised 46.5% (20) A-H3 virus, 23.3% (10) A-H1N1 (2009) virus, 20.9% (9) influenza B virus and 9.3% (4) influenza A unspecified. RSV detections identified at PathWest QEII and PMH decreased significantly this week.

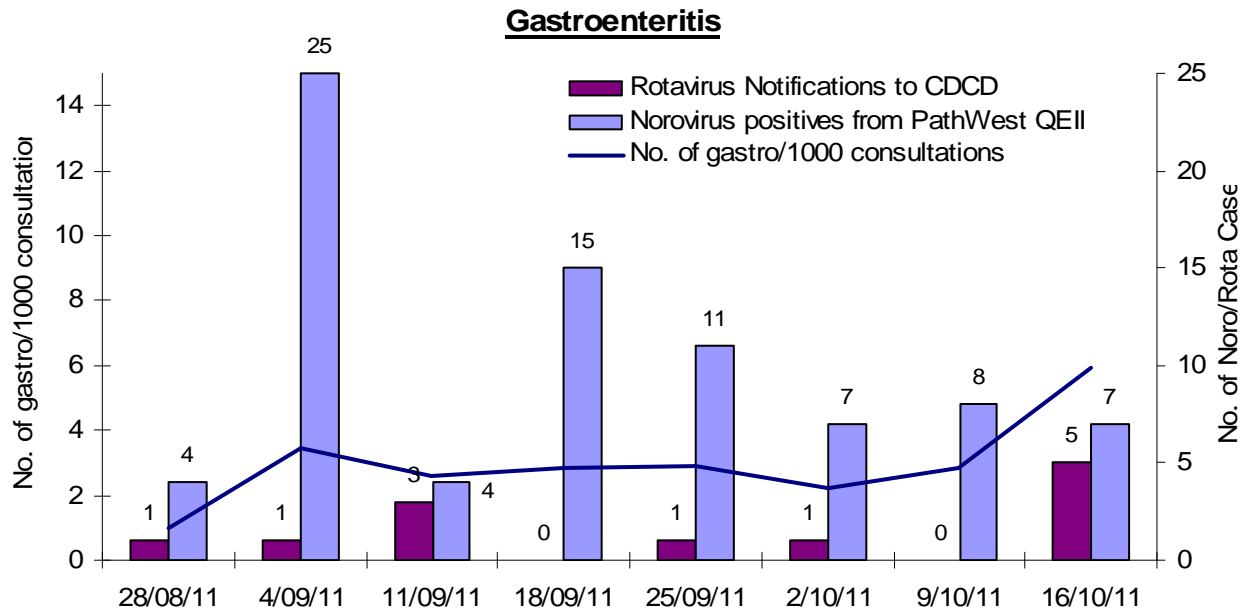
*PMH lab results for 9/10/2011 were unavailable for last week's report, but have been included in this report.

The following is a summary of current Emergency Department sentinel surveillance (EDSS) data for respiratory viral presentations. Baseline levels for respiratory viral presentations were calculated using the mean of weekly EDIS data from week 1, 2008 to week 52, 2010.



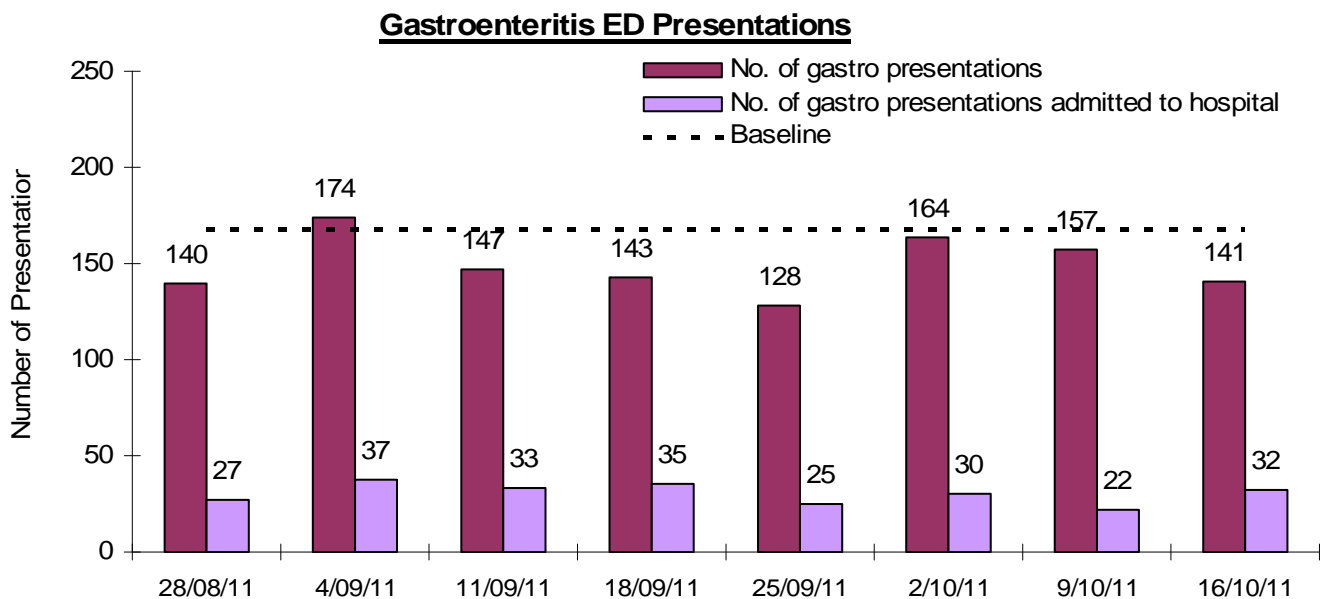
Respiratory viral presentations to Perth EDs continue to decrease, but remain above baseline levels. The proportion of presentations admitted to hospital increased, from 5.3% last week to 9.7% this week.

Gastroenteritis



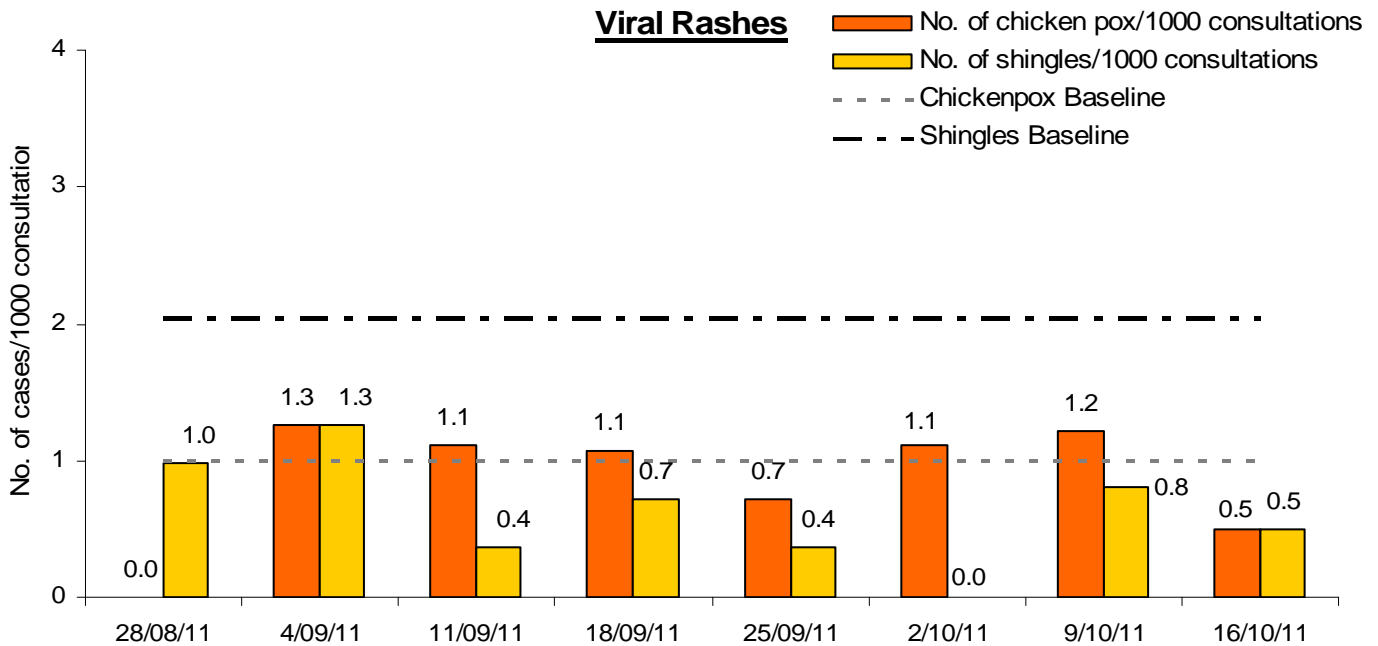
Gastroenteritis presentations to SPN(WA) GPs and rotavirus notifications received at CDCD increased this week, while norovirus positives identified at PathWest QEII remain relatively stable.

The following is a summary of current Emergency Department sentinel surveillance (EDSS) data for gastroenteritis presentations. Baseline levels for gastroenteritis presentations were calculated using the mean of weekly EDIS data from week 1, 2008 to week 52, 2010.



Gastroenteritis presentations to Perth EDs decreased this week, while the proportion of presentations admitted to hospital increased from 14% last week to 22% this week.

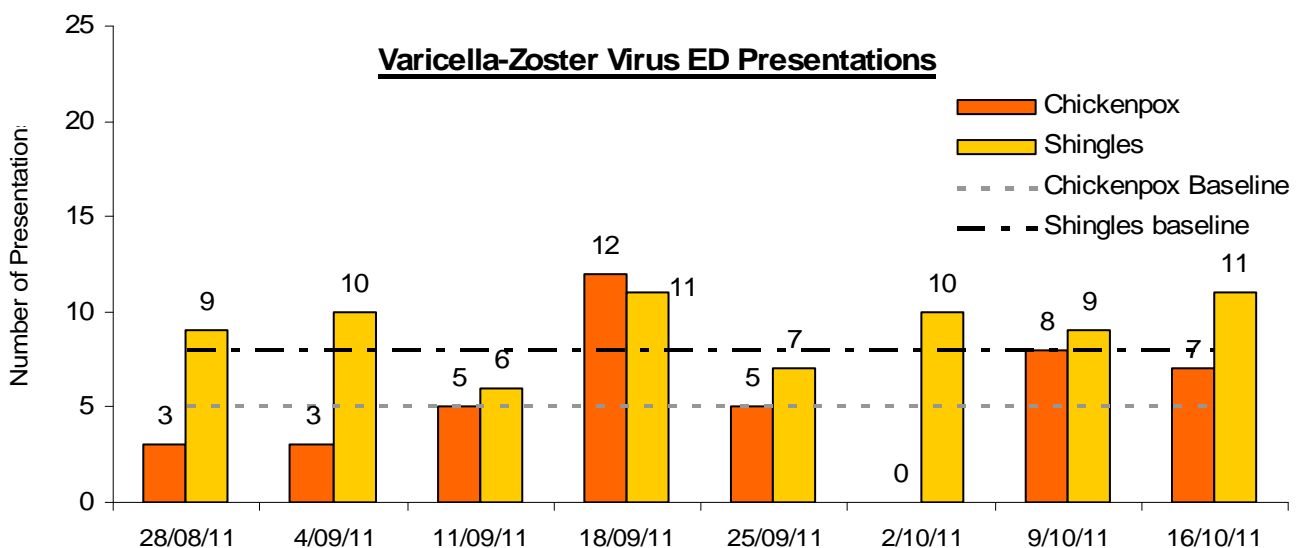
Viral Rashes



Chickenpox and shingles presentations to SPN(WA) GPs decreased this week. No cases of measles, mumps or rubella were reported.

Baseline levels for chickenpox and shingles presentations to SPN(WA) GPs per thousand consultations were calculated using the mean of weekly WA ASPREN data from week 1, 2008 to week 52, 2010.

The following is a summary of current Emergency Department sentinel surveillance (EDSS) data for varicella-zoster virus presentations. Baseline levels for varicella-zoster virus presentations were calculated using the mean of weekly EDIS data from week 1, 2008 to week 52, 2010.



Chickenpox and shingles presentations to Perth EDs continue to fluctuate at low to moderate levels. One chickenpox case and one shingles case were admitted to hospital.