

Audit period 1 2011 (January – March)



Government of Western Australia
Department of Health

Inside this report

Audit period 1 2011

- De-identified hospital data
- Aggregate data by hospital type
- Aggregate data by HCW
- Aggregate data by moment

Contact Details

For enquiries regarding
this report please contact:

The Healthcare Associated
Infection Unit

Phone: Rebecca (08) 9388 4859

Rob (08) 9388 4846

Fax (08) 9388 4888

Email:
robert.fletcher@health.wa.gov.au

This report describes the hand hygiene data collected by WA hospitals during audit period 1 2011 of the NHHI.

Hospital participation

- 54 hospitals provided data for this audit period (figure 1). Of these hospitals, 43 had submitted data in the previous reporting period (period 3 2010).
- 11 hospitals who did not submit data in period 3 2010 contributed this audit period. Ten of these hospitals have submitted data in previous NHHI audits, with one hospital submitting hand hygiene data as part of the NHHI for the first time.
- 30 of the 33 public hospitals required to submit data as part of the NHHI (as per Operational Directive 0197/09) are compliant with the mandatory requirement.

Results

- The WA aggregate hand hygiene compliance rate for audit period 1 2011 was 63.2% (23,543 moments). This represented a decrease (not statistically significant) in compliance compared to audit period 3 2010 (64.4%, 20,514 moments).
- The hand hygiene compliance rate of WA public hospitals was comparable to the previous audit period. WA private hospitals showed a statistically significant decrease in hand hygiene compliance compared to the previous audit period (table 1).
- Statistically significant variation in hand hygiene performance continues to exist between individual WA hospitals (figure 1).
- Similar to previous audit periods, statistically significant variations in hand hygiene compliance exist between healthcare worker groups. Medical professionals continue to demonstrate lower rates of compliance compared to other major healthcare worker groups (figure 3).
- Hand hygiene continues to be observed to occur more often after touching a patient (moments 3 and 4) than before touching a patient (moments 1 and 2) (figure 4).

Comment

The five key elements identified by the World Health Organization (WHO) as essential for sustained change in hand hygiene practices and included in the NHHI are:

- system change
- education and training
- evaluation and feedback
- workplace reminders and
- institutional safety climate.

WA hospitals should review their improvement activities against these key elements. Further information can be found in the WA Operational Directive 0236/10 *Hand Hygiene in Western Australia Hospitals*.

Audit period 1 2011 Data Notes

- Data was extracted from the NHHI database 31 March 2011.
- Hand hygiene data was not received from Esperance, Moora and Newman hospitals.
- 95% confidence intervals are included in figures 1- 4.

**Figure 1 Hand hygiene compliance audit period 1 2011 (January - March)
WA contributors**

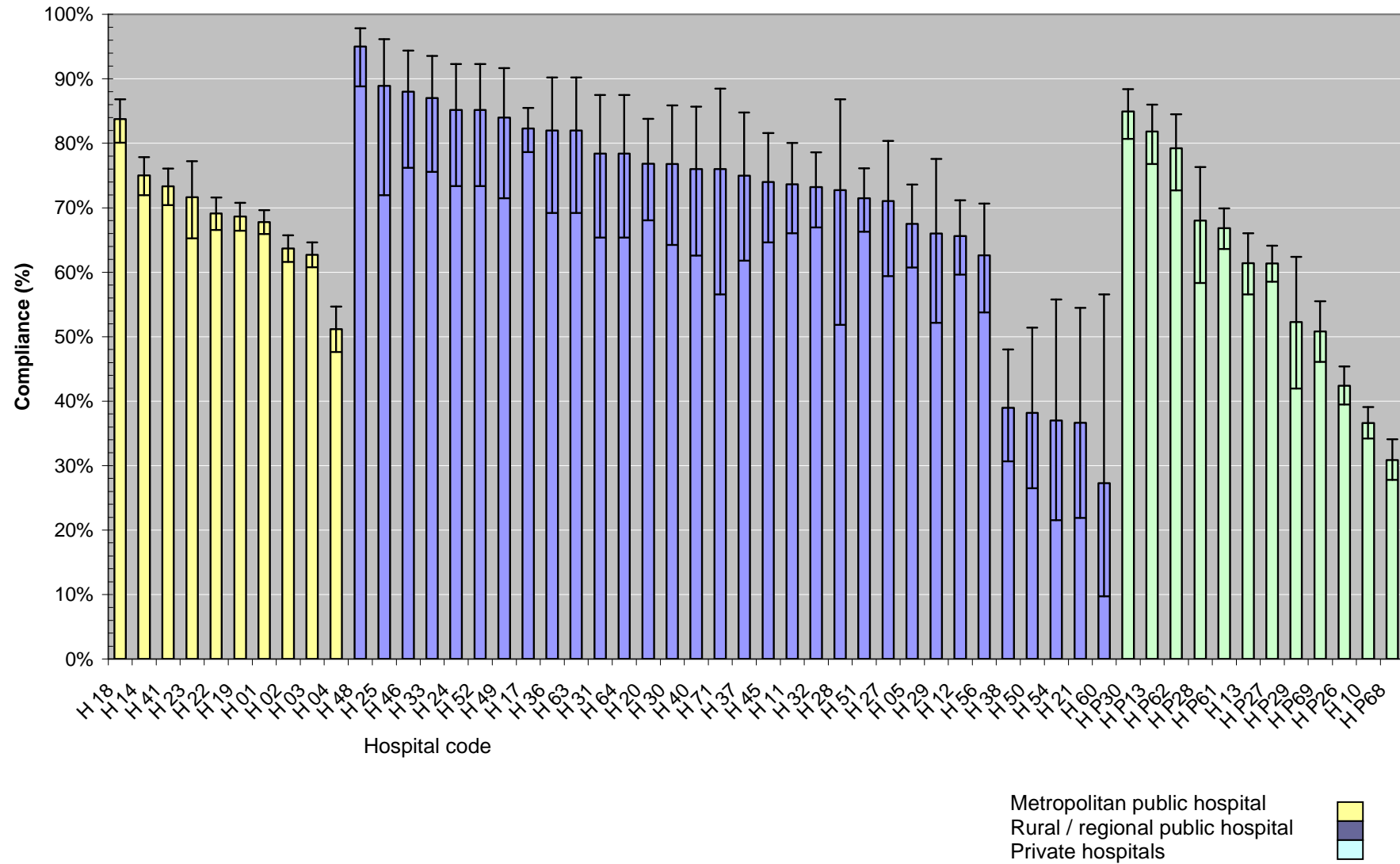
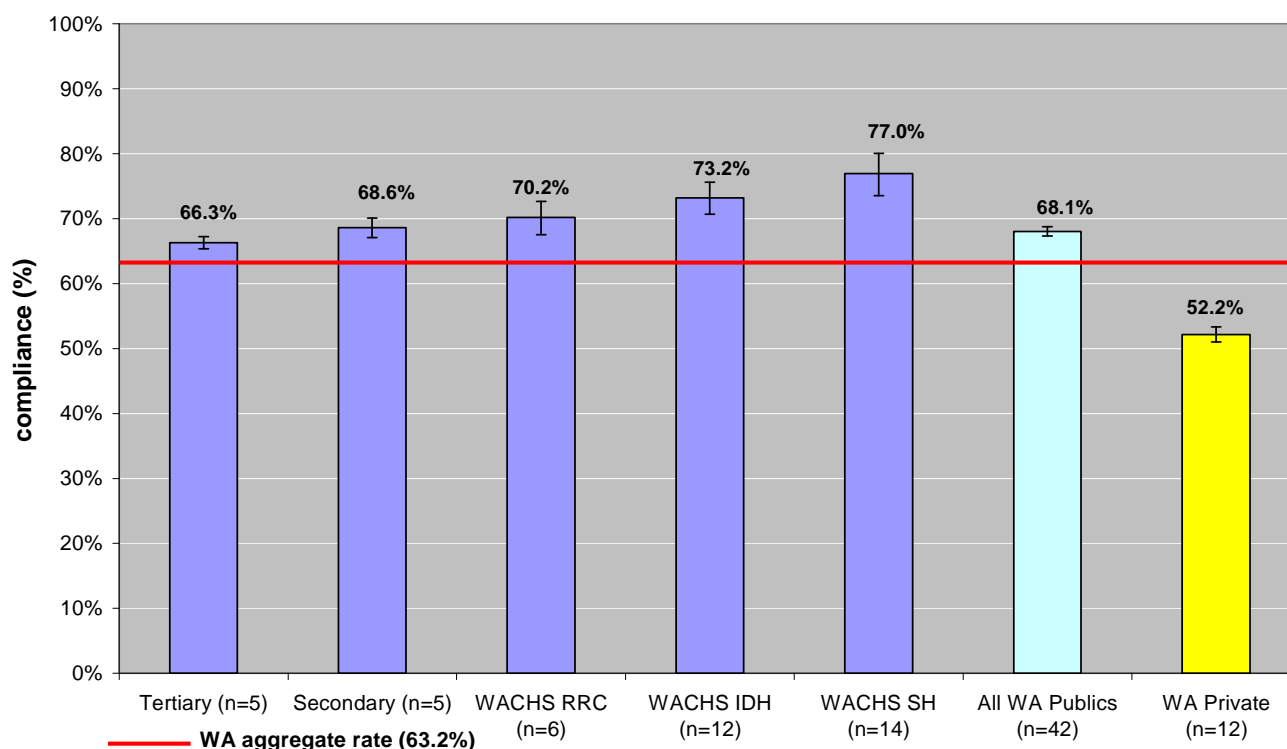


Table 1 Aggregate hand hygiene compliance by hospital type

Hospital type	Number of contributing hospitals	Number of moments observed (% of total WA moments)	Aggregate compliance period 1 2011 (%) [95% CI]	Aggregate compliance period 3 2010 (%) [95% CI]
Metropolitan Tertiary	5	9,622(41%)	66.3% [65.4 - 67.3]	61.7% [60.6 – 62.8]
Metropolitan Secondary	5	3,565(15%)	68.6% [67.1 – 70.1]	73.6% [72.2 – 75.0]
WACHS Regional Resource Centre	6	1,224(5%)	70.2% [67.6 – 72.7]	74.6% [72.5 – 76.6]
WACHS Integrated District Hospital	12	1,243(5%)	73.2% [70.7 – 75.6]	80.1% [77.4 – 82.5]
WACHS Small Hospital	14	638(3%)	77% [73.5 – 80.1]	77.6% [74.2 – 80.6]
WA Public Hospitals	42	16,292(69%)	68.1% [67.3 – 68.1]	68.2% [67.4 – 68.9]
WA Private Hospitals	12	7,251(31%)	52.2% [51.0 – 53.3]	55.1% [53.8 – 56.3]
All WA contributors	54	23,543	63.2%	64.4%

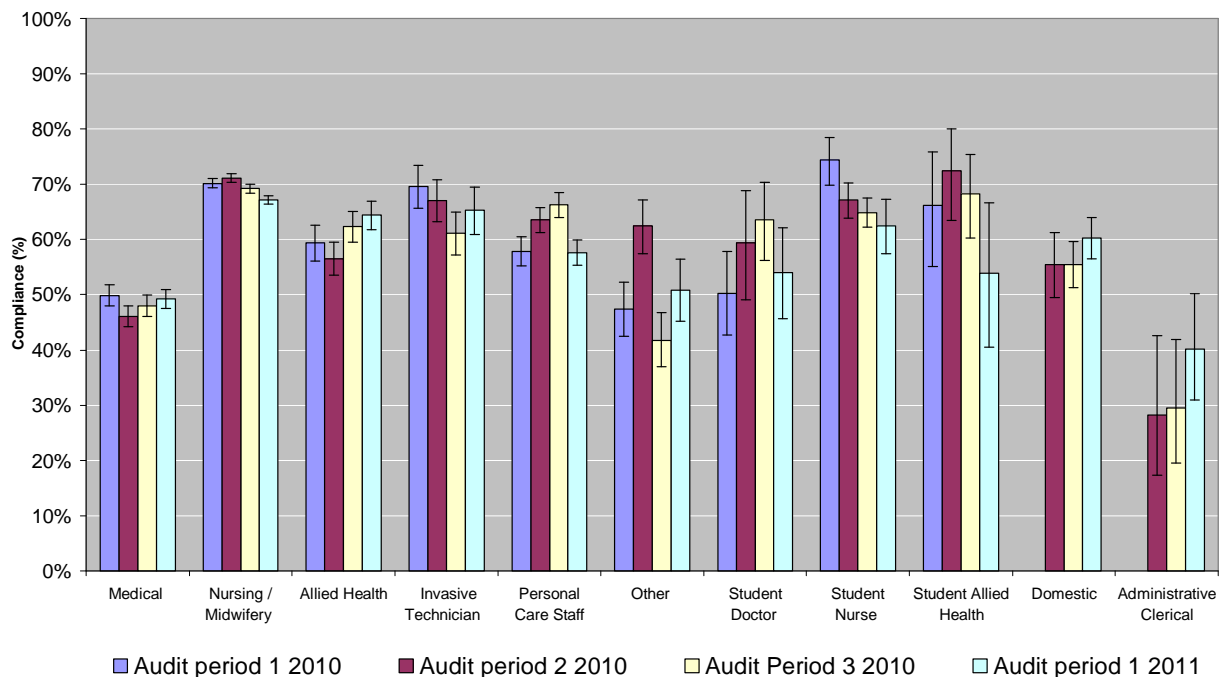
Figure 2 Aggregate hand hygiene compliance by hospital type (n=number of contributing hospitals)



Hospital Type

Tertiary = public metropolitan tertiary hospital
 Secondary = public metropolitan secondary hospital
 WACHS RRC = WA Country Health Service- Regional Resource Centre
 WACHS IDH = WA Country Health Service- Integrated District Hospital
 WACHS SH = WA Country Health Service- Small Hospital
 WA Private = private metropolitan or regional hospital

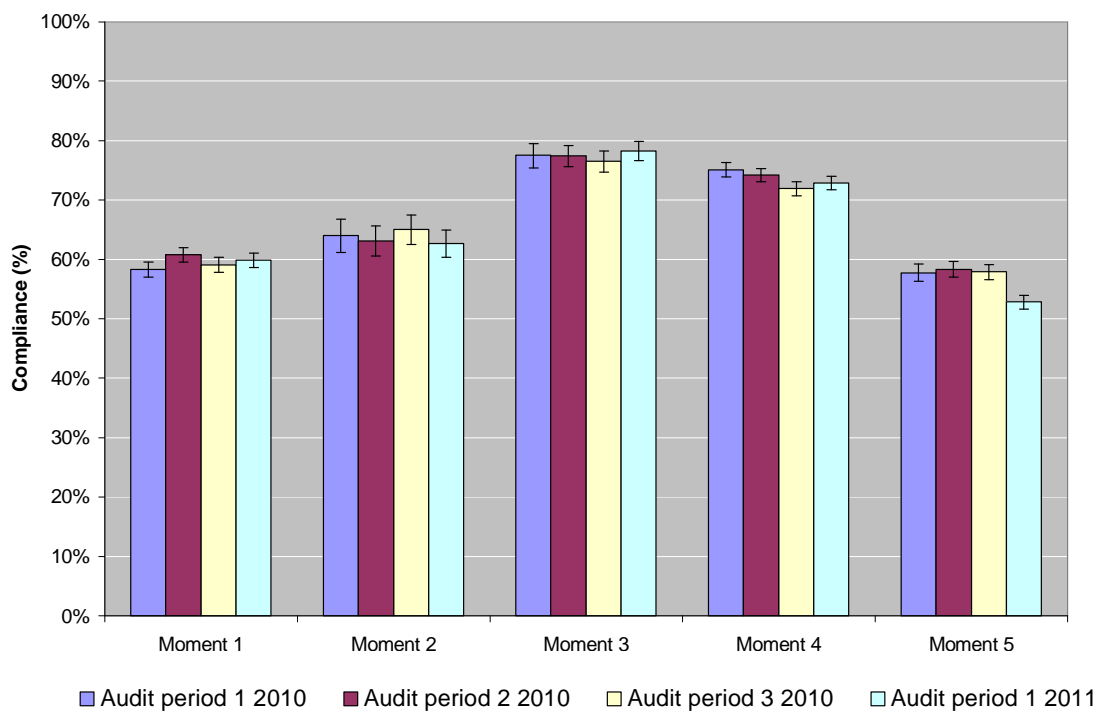
Figure 3 Hand Hygiene Compliance by Healthcare Worker category (All sites)



HCW category

Medical= medical staff; Nursing / Midwifery = a person registered with the Nurses and Midwives Board of WA;
 Allied Health = Physiotherapy / Occupational Therapy / etc; Invasive Technician = phlebotomist / dialysis technician / catheter lab technician / etc; Personal care staff = patient care assistant / orderly / nursing assistant / assistant in nursing;
 Other = clergy, maintenance employees Domestic = housekeeping / cleaning / food handling staff

Figure 4 Hand Hygiene Compliance by Moment (All sites)



Moment

Moment 1 = Before touching a patient;
 Moment 2 = Before a procedure;
 Moment 3 = After a procedure or body fluid exposure risk;
 Moment 4 = After touching a patient;
 Moment 5 = After touching a patients immediate surroundings

Notes for Interpretation

- WA Hospitals participating in the NHHI follow the auditing methodology outlined in the Hand Hygiene Australia '5 Moments for Hand Hygiene' Manual (accessible at <http://www.hha.org.au>).
- In NHHI audit period 2, 2010 HCW categories domestic and administrative / clerical were adopted to more accurately categorise health care roles previously grouped under the PSA/PCA/AIN/NA (renamed personal care) category.
- The World Health Organization (WHO) *Guidelines on Hand Hygiene In Healthcare* and *Guide to the Implementation of the WHO Multimodal Hand Hygiene Improvement Strategy* can be accessed at <http://www.who.int/gpsc/5may/tools/en/index.html>
- Western Australian Department of Health operational directives can be accessed at <http://www.health.wa.gov.au/CircularsNew/index.cfm>

