

Annex

**Structure & Function of National & State Committees Active During Alert & Response Phases of a Pandemic**

**Table 1 National health sector committees functional during ALERT & RESPONSE phases of a pandemic**

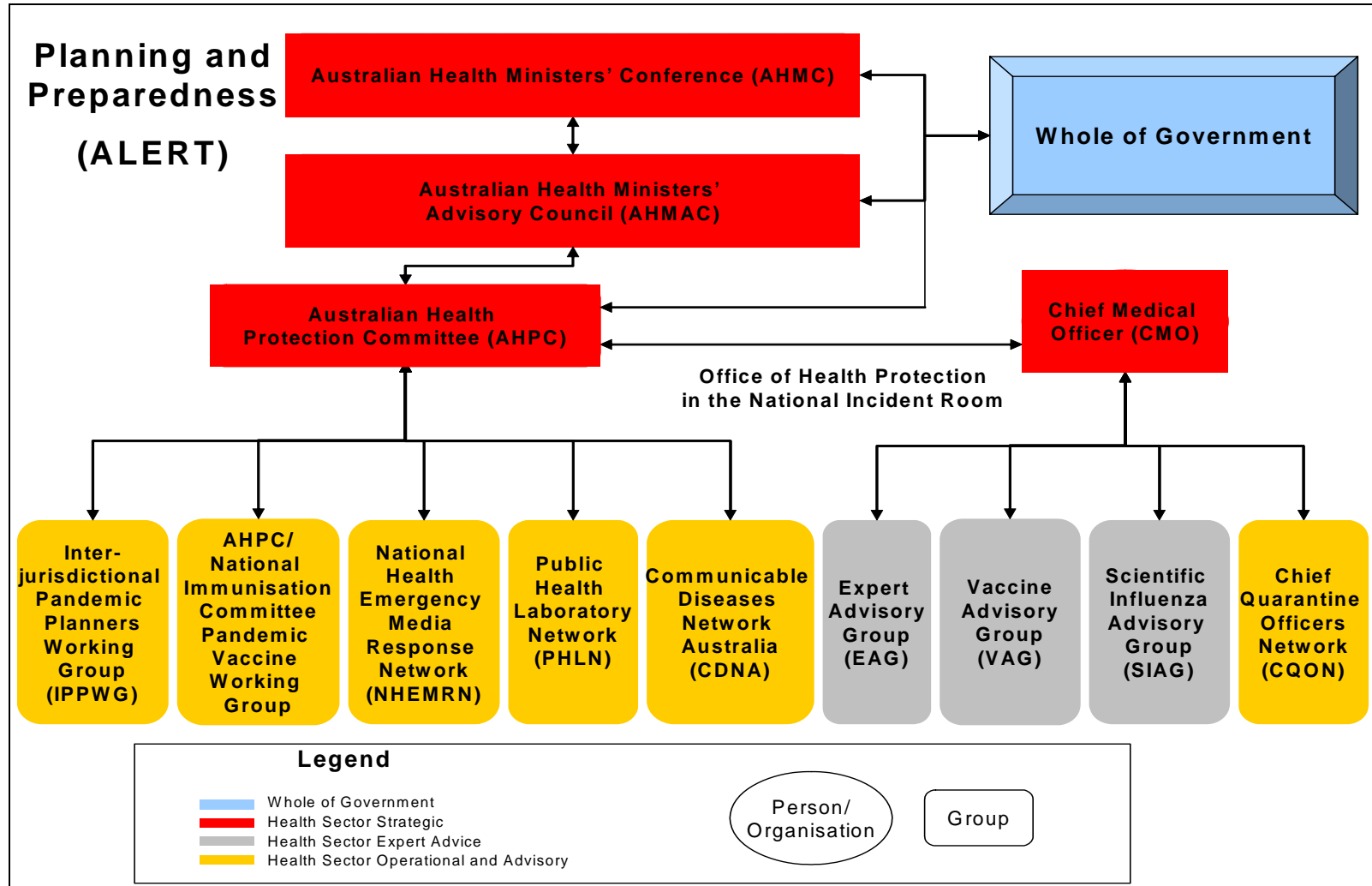
National Health Sector Committees			Function		
Committee	WA Health representation	Committee Reports to	Pandemic Alert	Pandemic Response	Pandemic Recovery
AHMAC Australian Health Ministers Advisory Council	Director General	AHMC Australian Health Ministers Council			
AHPC Australian Health Protection Committee  (Sub-committee of AHMAC)  AHPC is supported by the Dept of Health & Ageing Office of Health Protection	Chief Health Officer	AHMAC	<ul style="list-style-type: none"> <li>• Key advisory body to health ministers concerning the planning for &amp; response to health emergencies.</li> <li>• Facilitates the development of national health emergency policies, guidelines &amp; standards.</li> <li>• Provides a cross-jurisdictional response to public health emergencies.</li> </ul>	<p>The Secretary of DoHA &amp; State Health Department CEOs join AHPC in making strategic decisions or when developing advice to inform a whole of government response.</p> <p>Coordinates the national, inter-jurisdictional health response for the duration of the pandemic.</p>	
AQIS Australian Quarantine Inspection Service (Division of Dept of Agriculture, Fisheries & Forestry)	-	AHMAC	<ul style="list-style-type: none"> <li>• Implements the Quarantine Act 1908</li> <li>• Administers human quarantine services at the border on behalf of the Dept of Health &amp; Ageing (DoHA)</li> </ul>	International border control in collaboration with state & territory health department human quarantine officers	
AHPC/NIC National Immunisation Committee working group	Dir, CDCD Project Officer- Pandemic Influenza Planning	AHPC	Advises on the use of pandemic vaccines.	Refer to Pandemic Control Network	
CDNA Communicable Disease Network Australia	Director, CDCD	AHPC	<p>Sub-committee of AHPC</p> <ul style="list-style-type: none"> <li>• Provides public health leadership</li> <li>• Establishes national pandemic influenza surveillance methods &amp; provides operational resources for the investigation &amp; control of pandemic influenza outbreaks</li> <li>• Provides communicable disease &amp; epidemiological advice to the AHMAC through the AHPC</li> </ul>	Refer to Pandemic Control Network	

National Health Sector Committees			Function		
Committee	WA Health representation	Committee Reports to	Pandemic Alert	Pandemic Response	Pandemic Recovery
CQO Chief Quarantine Officers Network	Director, CDCD	CMO & AHPC	The CQON provides operational planning advice on border control	Refer to Pandemic Control Network	
COAG PWG Council of Australian Governments Pandemic Working Group	Director, CDCD	COAG	Whole of Government response. It is Australia's peak inter-governmental forum. Supported development of the National Action Plan for Human Pandemic Influenza	This group becomes the NPEC	
EAG Expert Advisory Group to the Chief Medical Officer (CMO)	-	CMO	<ul style="list-style-type: none"> <li>Members are drawn from NIPAC, CDNA, Dept of Health &amp; Ageing</li> <li>Provides medical, scientific and epidemiological advice to the CMO on level of risk &amp; pandemic phase</li> <li>Determines antiviral priority group recipients during containment &amp; maintenance phases</li> </ul>	Advises on pandemic phases	
NHEMRN National Health Emergency Media Response Network	Public Affairs Branch	AHPC	Develop a coordinated public communication response during a pandemic	<ul style="list-style-type: none"> <li>Coordinates Dept of Health &amp; Ageing's Media Unit &amp; the public communications response to health emergencies.</li> <li>Distribute relevant information.</li> <li>Coordinate website material across states and territories</li> <li>Activate the conference text messaging service for all members</li> </ul>	
NIPAC National Influenza Pandemic Action Committee Now Scientific Advisory Group (SIAG)	Dir, Division of Microbiology & Infectious Diseases, PathWest	CMO Dept of Health & Ageing	Provides scientific & clinical advice to the CMO & Dept of Health & Ageing on vaccines, antiviral drugs, influenza surveillance, jurisdictional planning, infection control & research priorities	Ongoing	Reviews the national public health response to the pandemic Advises Dept of Health & Ageing on revisions to the National Action Plan

National Health Sector Committees			Function		
Committee	WA Health representation	Committee Reports to	Pandemic Alert	Pandemic Response	Pandemic Recovery
NPEC National Pandemic Emergency Committee  Supports COAG	Chief Health Officer	Department of Prime Minister & Cabinet		<ul style="list-style-type: none"> <li>Activated once O/S4 declared</li> <li>Oversees implementation of the National Action Plan for Human Pandemic Influenza</li> <li>Provides strategic advice to COAG</li> <li>Changes phase of pandemic alert in Australia</li> <li>Introduces border control measures, quarantine &amp; social distancing</li> <li>Declares national emergency</li> <li>Communicates key messages to public</li> <li>Coordination of critical supplies</li> </ul>	<p>Supports consistent national recovery strategies</p> <p>Recommends stand down from national emergency</p>
PCN Pandemic Control Network	Dir, CDCD  Chief Quarantine Officer  Director, Division of Microbiology & Infectious Diseases, PathWest	AHPC	Refer to CDNA & PHLN	<p>Combined expertise of the following groups: CDNA, PHLN, CQO, IPPWG, AHPC/NIC</p> <p>Reviews epidemiology, surveillance plans and case management guidelines</p>	
PHLN Public Health Laboratory Network	Director, Division of Microbiology & Infectious Diseases, PathWest	AHPC	<ul style="list-style-type: none"> <li>Maintains collaborative links between pathology laboratories</li> <li>Advises CDNA &amp; National Public Health Partnership to ensure optimal use of laboratory resources for surveillance during an influenza pandemic</li> </ul>	Refer to Pandemic Control Network	
IDETF (Australian Government) Interdepartmental Emergency Taskforce	-	Department of Prime Minister & Cabinet		<p>Inter-departmental emergency taskforce of heads of federal agencies</p> <p>Makes key national decisions affecting Australians overseas</p>	

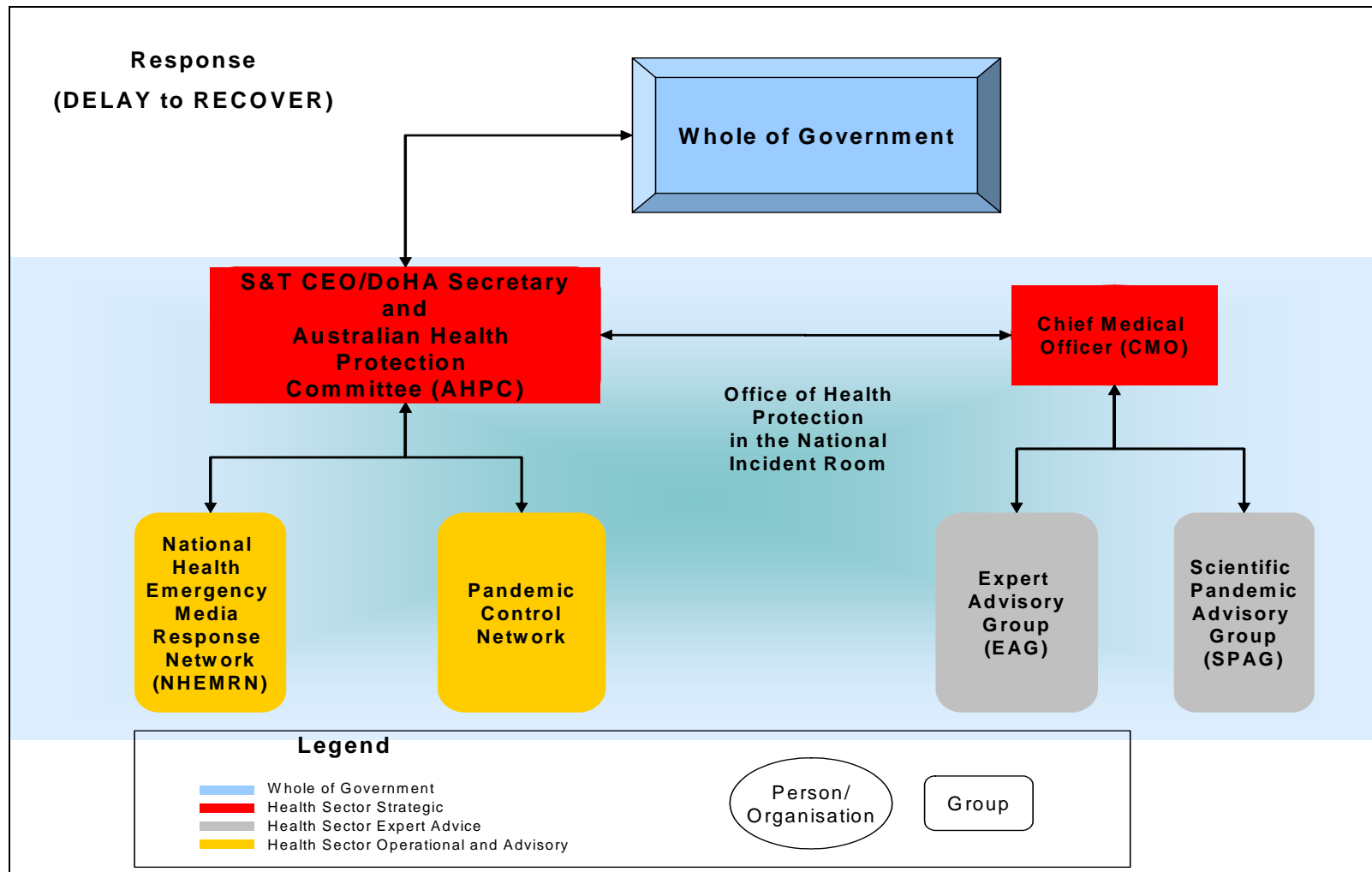
National Health Sector Committees			Function		
Committee	WA Health representation	Committee Reports to	Pandemic Alert	Pandemic Response	Pandemic Recovery
IDC Inter-departmental Committee	-	Department of Prime Minister & Cabinet	Pandemic prevention and preparedness		
IPPWG Inter-jurisdictional Pandemic planning Working Group	Project Officer – Pandemic influenza Planning	AHPC	Ensures national consistency across jurisdictional operational responses	Refer to Pandemic Control Network	
SIAG Scientific Influenza Advisory Group	-	CMO	<ul style="list-style-type: none"> <li>Provides scientific and clinical advice on pandemic influenza related matters</li> <li>Reviews pandemic influenza planning assumptions</li> </ul>	See SPAG	
SPAG Scientific Pandemic Advisory Group	-	CMO	-	SIAG & VAG combines to form SPAG <ul style="list-style-type: none"> <li>Advises on the medical and scientific basis for health sector interventions</li> <li>Advises on the need to modify response policies.</li> </ul>	
VAG Vaccine Advisory Group	-	CMO	Advises on vaccines that could be used to control a pandemic virus.	See SPAG	

Figure 1 National health sector committees functional during the ALERT phase of a pandemic



Source AHMPPI 2008

Figure 2 National health sector committees functional during the RESPONSE phase of a pandemic



Source AHMPPI 2008

**Table 2 State committees functional during alert & response phases of a pandemic**

Western Australia Committees				Functional status		
Committee	Membership	DOHWA representation	Reports to	Pandemic Alert	Pandemic Response	Pandemic Recovery
HSPWP Health Services Pandemic Planning Working Party	Manager, DPMU Project Manager – Hospital Pandemic Planning, DPMU Metropolitan public & private hospital representatives Principal Scientist, PathWest	Chair, Manager, DPMU	HHCG Hospital Health Coordinators Group	Coordinates the development of metropolitan public and private hospital pandemic influenza business continuity plans.		
HHCG Hospital Health Coordinators Group	Manager, DPMU Senior Policy Officer, DPMU WA Country Health Service Principal Medical Consultant, Health Protection Group Metropolitan Hospital / Health Service Coordinators PathWest	Chair, Manager, DPMU	Health Services Subcommittee	Coordinates metropolitan health service preparedness planning for a major incident	<ul style="list-style-type: none"> <li>• Activates hospital BCPs</li> <li>• Advises on the management of health services during periods of acute surge capacity</li> <li>• Coordinates the response by metropolitan health services to a major incident</li> <li>• Assess impact on health services</li> </ul>	
HSS Health Services Sub-committee  Formerly State Health Disaster Management Committee		Chair, Manager, DPMU	During the Interpandemic period reports to the State Emergency Management Committee (SEMC)  During the pandemic response period reports to the State Emergency Coordination Group (SECG)	Maintains WESTPLAN – HEALTH  Assists the State Health Coordinator in strategic planning & management of major health emergencies, including sourcing health service resources	Assists the State Health Coordinator in the management of major health emergencies, including sourcing health service resources  Provides support to the State Human Epidemic Controller	

Western Australia Committees				Functional status		
Committee	Membership	DOHWA representation	Reports to	Pandemic Alert	Pandemic Response	Pandemic Recovery
<p>HSS Health Services Sub-committee</p> <p>Formerly State Health Disaster Management Committee</p>		Chair, Manager, DPMU	<p>During the Interpandemic period reports to the State Emergency Management Committee (SEMC)</p> <p>During the pandemic response period reports to the State Emergency Coordination Group (SECG)</p>	<p>Maintains WESTPLAN – HEALTH</p> <p>Assists the State Health Coordinator in strategic planning &amp; management of major health emergencies, including sourcing health service resources</p>	<p>Assists the State Health Coordinator in the management of major health emergencies, including sourcing health service resources</p> <p>Provides support to the State Human Epidemic Controller</p>	
<p>PING Public Information Group Sub-committee of the SEMC/SECG</p>		Public Affairs Branch	SEMC/SECG		<p>Responsible for informing and educating the public about emergencies</p> <p>Distribution of DoH media releases &amp; other information to key government and non-government stakeholders</p>	
<p>SDC State Disaster Council</p>	<p>Premier</p> <p>Relevant ministers</p> <p>Senior officials</p>				<p>During a state of emergency the SDC is the peak decision-making body in WA</p>	
<p>SEMC State Emergency Management Committee</p>	<p>State Emergency Coordinator is the Police Commissioner</p> <p>4 functional groups:</p> <ul style="list-style-type: none"> <li>- Emergency Services</li> <li>- Public Information</li> <li>- Lifeline Services</li> <li>- Recovery Services</li> </ul> <p>Dept of Community Development</p> <p>Dept of Health</p>	State Health Coordinator	<p>Minister of Police &amp; Emergency Services</p> <p>State Disaster Council</p> <p>National Pandemic Emergency Committee</p>	<p>Develops WA emergency management arrangements</p>	<p>Becomes the State Emergency Coordination Group (SECG)</p>	

Western Australia Committees				Functional status		
Committee	Membership	DOHWA representation	Reports to	Pandemic Alert	Pandemic Response	Pandemic Recovery
SECG State Emergency Coordination Group	Key agencies involved in response and recovery as listed above.	State Health Coordinator  State Human Epidemic Controller	State Disaster Council		Response arm of the SEMC  Established by State Emergency Coordinator at the request of the Hazard Management Agency to assist in the provision of a coordinated (non-health) multi-agency response. Contributes to national response efforts through COAG and NPEC	
SHEEMC State Human Epidemic Emergency Management Committee  SHEMC is a sub-committee of SEMC	Medical Coordinators, CDCD Medical Epidemiologist, CDCD Clinical Director, Department of Microbiology, PathWest Director Environmental Health State Health Coordinator Executive Officer Emergency Management (DoH) Legal advisor (DoH) Consumer representative Manager, DPMU		Health Services Subcommittee	Support development of WESTPLAN – Human Epidemic	Members co-opted from WAIPAC & CDC Strategic Advisory Group  Provides expert advice to the State Epidemic Controller	Reviews emergency response post-pandemic
WAGHIPT WA Government Human Influenza Pandemic Taskforce Executive	Dept of Premier & Cabinet Dept of Health Dept of Community Development Fire & Emergency Services Authority WA Police WA Local Gov Assoc	Director, CDCD	Dept Premier & Cabinet COAG	Supports the Taskforce		

Western Australia				Functional status		
Committee	Membership	DOHWA representation	Reports to	Pandemic Alert	Pandemic Response	Pandemic Recovery
WAGHIPT WA Government Human Influenza Pandemic Taskforce	Dept of Premier & Cabinet Dept of Health Dept of Industry & Resources Dept of Consumer & Employment Protection Dept of the Attorney General Dept of Treasury & Finance Dept of Community Development WA Police WA Local Government Association	Director, CDCD	WAGHIPT Executive	Reviews & refines the WA Government Human Influenza Pandemic Plan  Oversees whole-of- government planning activities against each of the WHO 6 phases	State Emergency Coordination Group assumes responsibility (same membership).	
WAPIAC WA Pandemic Influenza Advisory Committee  Sub-committee of the State Human Epidemic Emergency Management Committee (SHEEMC)	Director Communicable Disease Control Directorate State Health Coordinator Medical Coordinator, CDCD, DoH Medical Epidemiologist, CDCD, DoH Infectious diseases epidemiologist Clinical Virologist, PathWest Director, Environmental Health Directorate, DoH Areawide Medical Coordinator, DoH Country Health Services, DoH Chief Veterinary Officer, Department of Agriculture Director, Public Relations, DoH Infectious diseases		WAGHIPT  Health Services Subcommittee  During the Interpandemic period reports to the State Emergency Management Committee (SEMC)  During the pandemic response period reports to the State Emergency Coordination Group (SECG)	Support development of the WA Health Management Plan for Pandemic Influenza (WAHMPPI)  Support the development of pandemic influenza business continuity plans by major stakeholders  Informs the State Health Disaster Management Committee	See under SHEEMC	

	physician, DoH Infection Control Practitioner, DoH General Practitioner WA Local Government Association Coroner's Office Mental Health Metropolitan Cemeteries Board St John Ambulance WA Police Pharmacy representative Australian Funeral Directors Association					
--	---	--	--	--	--	--

December 2008

Figure 3.

